

Instruction Sheet

Subject: 8263454 Adding a Rear Touch Screen Controller Kit Instructions

Models affected: MercoMax 2x2 MHC Holding Cabinets

Follow these instructions to add a rear touch screen controller to the MercoMax 2x2 MHC holding cabinets.

In This Kit		
Part #	Description	Qty
8076215	CONTROL, MHC UI TOUCH	1
8076197	JUMPER, MHC 2X2 ID UI SMRP	1
8076181	CABLE, MHC COMM UI TO UI	1
8076179	CABLE, COMM CROSSOVER 25"	1
8197472	INSTRUCTIONS	1

1. Remove power from the unit.
2. Remove the four (4) screws that secure the top of the cabinet (see Figure 1).



Figure 1

3. Lift and remove the top of the cabinet (see Figure 2).
4. Remove the right side of the cabinet, as viewed from the front of the cabinet by sliding the side up (see Figure 3).



Figure 2

5. Remove the six (6) screws (3 on top and 3 on bottom) attaching the blank plate assembly (see Figures 4 and 5). Save the screws to attach the new controller.



Figure 3



Figure 4



Figure 5

6. Remove and scrap the blank plate (see Figure 6), but do **NOT** discard the inside retainer as it will be needed later (see Figure 7).
7. The retainer plate has one side that is wider than the other. The retainer plate may need flipped as the wide side needs to be closest to the center of the cabinet.



Figure 6

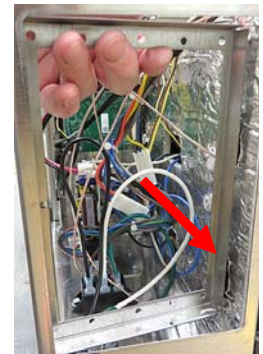
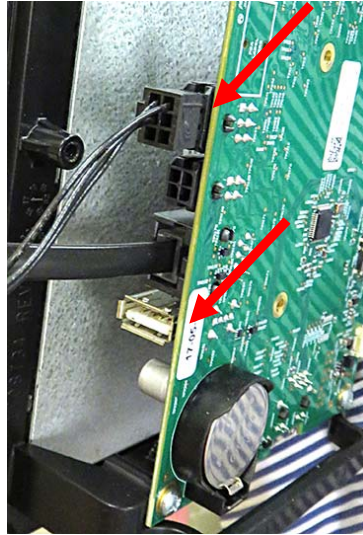
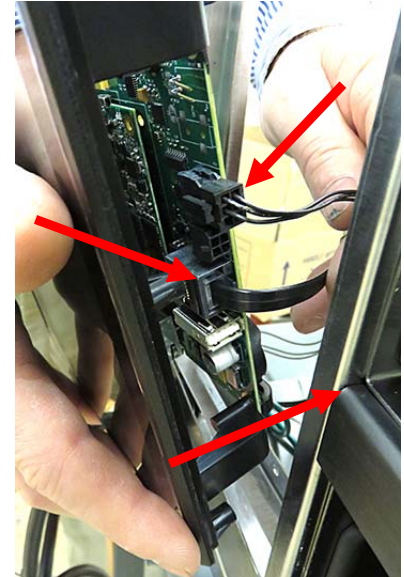


Figure 7

8. Connect the supplied RJ-45 and the 6-pin cables to the touch screen controller (see Figure 8) prior to mounting in the cabinet.
9. Carefully route the cables through the opening of the cabinet where the new touchscreen will be mounted.
10. Position the new touch screen controller with connectors with the cables attached towards the center of the cabinet (see Figure 9).


Figure 8

Figure 9

11. Position touch screen controller into the retainer saved from step 6 (see Figure 10).
12. Using the 6 screws removed in step 5, attach the controller to the retainer (see Figure 11).


Figure 10

Figure 11

13. Connect the supplied locator plug to the top of the new controller (see Figure 12).
14. Attach the other end of the locator plug to the cabinet by removing the cabinet screw (see Figure 13).

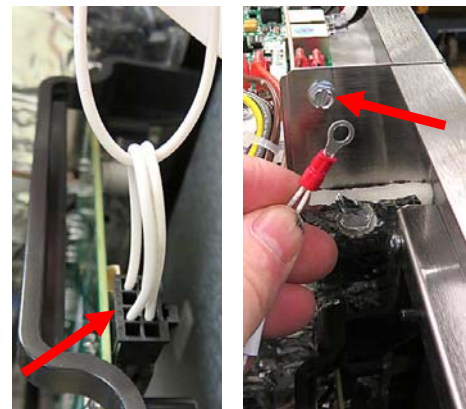
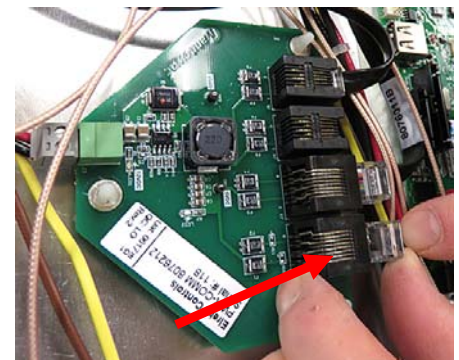
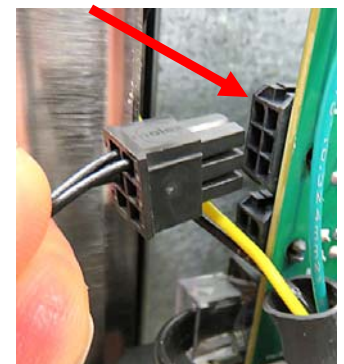

Figure 12

Figure 13

Figure 14

15. Attach the other end of the RJ-45 cable from the new controller to the far left connector on the triangle power communication board located on the top of the cabinet (see Figure 14).


Figure 15

16. Connect the other end of the 6-pin cable from the new controller to the 6-pin connector located on the outside edge of the front existing controller (see Figure 15).

17. Reattach the sides and top of the cabinet.
18. Restore power and test function of the ne controller.