

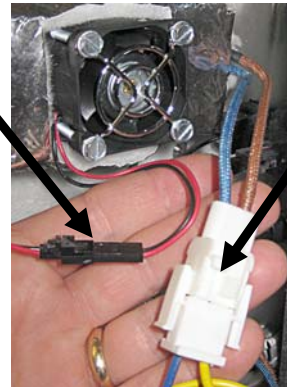
# Instruction Sheet

**Subject: Heater Kit Instructions**

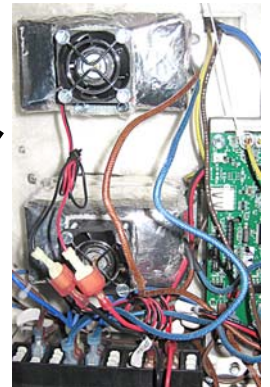
**Models affected: Merco Holding Cabinets**

**If the replacement heater fan assembly or heater pad assembly has the same connectors as the assembly being replaced, (see example in Figure 1), please discard these instructions, as no modifications are necessary. If replacing a heater fan assembly proceed to step 1 below. If replacing a heater pad assembly proceed to step 1 on page 2.**

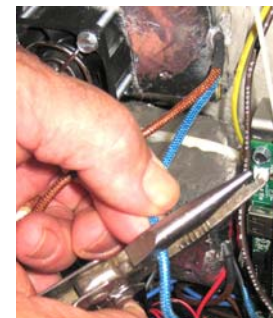
1. If replacing the heater fan assembly in holding cabinets without the two pin connectors (see Figure 2), proceed to step 2.
2. Using wire cutters, snip both heater wires of the old heater assembly, approximately two inches from the assembly (see Figure 3).
3. Using wire cutters, snip both the red and black wires of the old fan motor below the male spade connectors (see Figure 4).
4. Remove the old heater assembly.
5. Attach the new heater assembly.
6. Using wire cutters, snip both connectors off the new heater assembly (see Figure 5).
7. Using wire strippers strip the wires still attached to the cabinet and the wires on the new assembly approximately 3/8" (9mm) (see Figure 6).
8. Attach the new assembly wires to the old wires still attached to the cabinet using the supplied wire snap connectors (see Figure 7 and 8). To use the snap connectors, lift completely the orange lever. It will stay upright. Insert stripped wires and close orange levers.
9. Pull gently on all wires attached to the snap connectors ensuring they are secured in the connector (see Figure 9).
10. Test to ensure all heaters/thermostats are operational.
11. Replace cabinet sides to complete the repair.



**Figure 1**



**Figure 2**



**Figure 3**



**Figure 4**



**Figure 5**



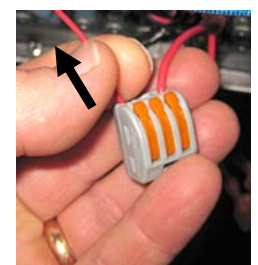
**Figure 6**



**Figure 7**



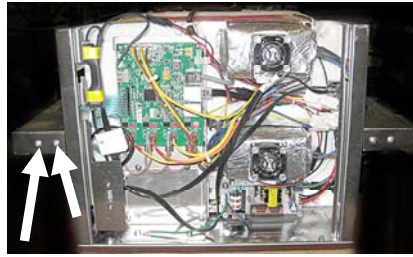
**Figure 8**



**Figure 9**

**If replacing a heater pad assembly proceed to step 1 below.**

1. Remove air diffusers above heater pad by raising the locking clips and sliding the diffusers out of the cabinet.
2. Remove the end panels by sliding up and away from the cabinet.
3. Remove the timer bar above the zone by removing the two screws at each end and carefully lowering the bars (see Figure 10).
4. From each side remove nuts attached to the studs of both end clips (see Figure 11).
5. Remove the end clips by pulling away from the cabinet wall (see Figure 12).
6. From each side remove hex shoulder screw and standard screws holding aluminum heater plate above zone (see Figure 13).
7. Thermocouple connections, on both sides of the cabinet, are at the top of the IO board. Brown wires attach heater-plate related thermocouples (see Figure 14).
8. Locate the appropriate wires associated with the heater plate to be removed. Using wire cutters, snip both wires of the old thermocouple, approximately four to six inches from the connections (see Figure 15).
9. Using wire cutters, snip both heater wires of the existing heater pad assembly to be removed, approximately four to six inches from where it enters the electronics part of the cabinet (see Figure 16).
10. Pull the wires through the cabinet interior (see Figure 17).
11. Pull the heater plate out carefully.
12. Flip the aluminum plate over. Peel the old heater pad off and attach the new one (see Figure 18).
13. Reverse the steps to install the new heater pad assembly.
14. Using wire cutters, snip all the connectors off the new heater pad assembly near the connectors (see Figure 19).
15. Using wire strippers strip the wires still attached to the cabinet and the wires on the new assembly approximately 3/8" (9mm) (see Figure 20 and 21).



**Figure 10**



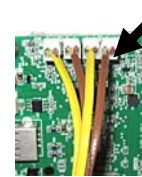
**Figure 11**



**Figure 12**



**Figure 13**



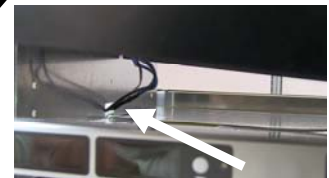
**Figure 14**



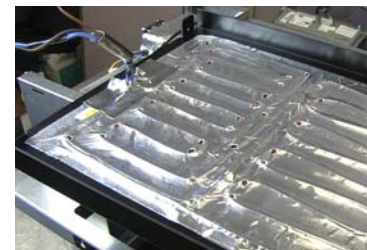
**Figure 15**



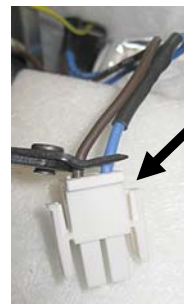
**Figure 16**



**Figure 17**



**Figure 18**



**Figure 19**

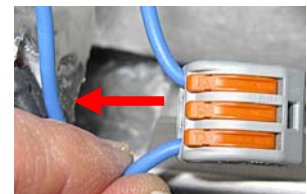


**Figure 20**



**Figure 21**

16. Attach the new assembly wires to the old wires still attached to the cabinet using the supplied wire snap connectors (see Figure 22 and 23). To use the snap connectors, lift completely the orange lever. It will stay upright. Insert stripped wires and close orange levers.
17. Attach the new pad thermocouple wires to the old thermocouple connector (see Figure 24 and 25).
18. Pull gently on all wires attached to the snap connectors ensuring they are secured in the connectors (see Figure 26).
19. Test to ensure all heaters/thermostats are operational.
20. Replace cabinet sides to complete the repair.

**Figure 22****Figure 23****Figure 24****Figure 25****Figure 26**